



News from our Churches

St John's Settle

Sunday worship

5 th May	10:30am	Rev. T Broughton Holy Communion
12 th May	10:30am	Jane Mansergh
19 th May	10:30am	Wendy Holt
26 th May	10:30am	Margery Dowling

Coffee Pot

Every Wednesday 10:30am – 12:00 noon.
Tea, coffee, cakes etc.

The first Coffee Pot of each month is always in aid of a charity. In April this raised £289.98 for Guide Dogs for the Blind. On 1st May it will be in aid of Settle Swimming Pool.

Bible book club

Led by Rev. Tim Broughton and held at 12:00 noon after Coffee Pot on the 2nd Wednesday of each month. On 8th May we will be looking at Acts Chapters 1-8.

Bible study group

Meeting in the lounge at Limestone View at 2:30pm on the 3rd or 4th Wednesday of the month, led by Wendy Holt, this is open to both residents and non-residents. On 22nd May, we will be looking at Matthew 10 v.16-42.

Songs of Praise

Rev. Tim Broughton will lead Songs of Praise for the Easter season at Limestone View at 2.30 pm on Wednesday 15th May. Residents and non-residents are welcome!

Yorkshire Dialect

Alan Hemsworth will give a talk entitled 'In Grandmother's Footsteps' at 7.0 pm on Saturday 18th May. Alan is a well-known speaker in the Settle area, and everyone is welcome to this talk about the Yorkshire dialect. Admission is free.



Walk and Prayer for the Environment

This takes place on the 1st of each month.

Details available from Judith Allinson

Prayer Meeting

Members of all churches in Settle meet for prayer at the Catholic Church of St Mary and St Michael on Tillman Close at 12.00 noon on the 1st Tuesday of each month.

Bentham Methodist Church

Sunday worship

5 th May	10:30am	Michael Ellershaw
12 th May	10:30am	Liz Whitfield
19 th May	10:30am	Rev. T Broughton HC followed by a shared meal
26 th May	10:30am	Charlie Preece

Toddle In

Toddler group meet every Monday in term time 10am to 11:30am, new volunteers welcome – contact Sue Broadbent

Bentham Praise

Practice in church on Monday at 2pm

Men's Breakfast

Meet twice per month at Bowland View, contact David Bayes for details, 8:30am, 7th & 21st May.

Afternoon Praise at Bowland View

Churches Together in Bentham are starting fortnightly services at Bowland View. The first service is Wednesday 8th May at 4pm.

Farming Community Network Shed

Wednesday morning at Bentham Auction Mart, supported by Churches Together in Bentham

Bentham Pantry Club

Open 11am-12:30pm and 3:30pm-4:30pm every Wednesday run by Churches Together in Bentham. There is a collection box for donations in the porch.

Newby Chapel

Sunday worship

5 th May	6:30pm	Easy Church
12 th May	11am	Margery Dowling
26 th May	2pm	Jane Mansergh

Burton In Lonsdale

Sunday worship at All Saints Parish Church

5 th May	11am	Susan Wilson
12 th May	9:30am	Mavis Speight
19 th May	11am	United service
26 th May	9:30am	Liz Whitfield

Hellifield Chapel

Sunday worship

5 th May	2pm	Own Arrangements
12 th May	10:30am	Revd. T Broughton Lego Church
	2pm	Revd. R Fox
19 th May	2pm	Revd. T Broughton Holy Communion
26 th May	2pm	Pauline Wright Café church

New venture

We are starting a Well-being Café on the 2nd Wednesday of the month, starting on

May 8th, from. 10.30 – 12 noon.

Refreshments will be served and there will be friendship, music and activities in a dementia inclusive environment.

Dementia Forward are supporting and advising us.

Other events

Welcome Mat meetings and Strong and Steady sessions are held on alternate Mondays. More details are given on www.hellifieldherald.org

Ingleton Methodist Church

Sunday worship

5 th May	10:30am	Charlie Preece
12 th May	10:30am	AAW P. Thomas
19 th May	10:30am	AAW E. Lawson
26 th May	10:30am	Revd. T Broughton

Warm Spaces

Coffee mornings, Fridays 9:30 – 11:30am

Marriage Course

Saturday 4th May, 10am to 3pm, free of charge with childcare provided. RSVP to Rachel Whitfield

Christian Aid Quiz

Saturday 18th May the ever-popular quiz will be held at 7pm with a pie & peas supper. Teams of up to 6. RSVP to Rachel Whitfield.

Online services & reflections

Don't forget that online services and evening reflections can be found on our YouTube channel

www.youtube.com/@SettleMethodistCircuit

Thank you to all who contributed to this issue, please send all future news & events to Lucy on 07518 517 901 or settlemethodistcircuit@outlook.com

If you have any questions or comments about this newsletter, please don't hesitate to get on touch.

Deadline for the next newsletter is:

19th May.



LET IT GROW this No Mow May

It's time for No Mow May and we'd love as many churches and households as possible to..... give lawnmowers a month off!!

You might be surprised what germinates in your lawn or church grounds by letting things grow. Clover seeds may already be present (they used to be in packets of lawn seed) and other seeds may get blown in or dropped by birds. Over the month (or two if you Let It Bloom June), plants that have been lying dormant have a chance to grow, bloom and make pollinators happy.

Let me share one wonderful photo sent by my son who lives in a built-up area of Huddersfield. This bird paid a visit to his back garden after spotting a rather plump and lazy wood pigeon. Nature is full of surprises!

From the Methodist Church Learning Network:

Care for God's creation!

There's an online webinar, Eco Church: baby steps to bronze taking place on Tuesday 21 May for those who are looking to respond to the climate emergency and want to take their first steps towards becoming an Eco Church. You can also sign up to the online Mission Planning Conference which is taking place on 13 July where you can discover how creation care and mission planning are about good news for all creation.

[Eco Church: baby steps to bronze Tickets, Tue, May 21, 2024 at 8:00 PM | Eventbrite](#)

District News

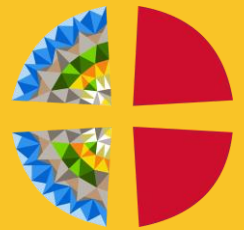
Rural & rooted - thriving small churches

This online webinar, happening on Tuesday 14 May at 7:30pm-8:30pm, is open to anyone from a small church or rural community looking for ways to be a church, even without a building. You will hear examples of using the Methodist Way of Life and explore how these commitments could be used in local contexts.

[rural & rooted - thriving small churches Tickets, Tue 14 May 2024 at 19:30 | Eventbrite](#)

Murder Mystery Fundraiser

Conistone Hostel are holding a Murder Mystery Fundraiser on Saturday 1st July from 3pm. Join Detective Bassett to solve the mystery of Lord Heathcliff's murder with a 3-course afternoon tea. The cost is £15 per person with the option to sleepover at extra cost. To join the party contact: friendsofconistone@gmail.com



Are you a busy volunteer?

Have you always got things to do for Church?

Would you like to nurture your own faith more?

Then read on as this is for you ...

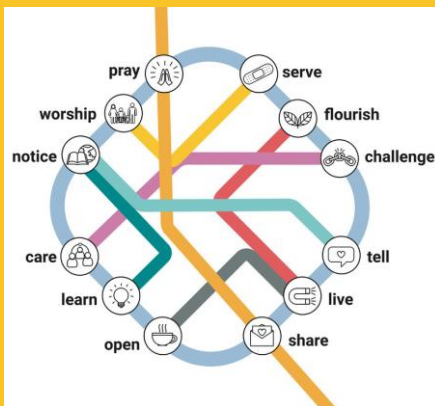
A Retreat for (Busy) Volunteers across the Yorkshire West District

Saturday 20th July 2024

10am to 1pm

@ Bradley Methodist Church in
the Skipton & Grassington Circuit

Take a morning out for you, a
space to connect with God, to be,
to reflect on your journey of faith
and look ahead to Lent.



Venue Details:

- Address: Lidget Road, Bradley BD20 9ED
- What Three Words: owls.tummy.reset

Bookings:

- Please email David Goodall (mission@ywmethodist.org.uk) to book.
- Please include any accessibility or other needs you have in your email so we can ensure you are fully able to enjoy the retreat.

Timings:

- Coffee from 9:30am for a 10am start
- Finishing at 1pm
- Feel free to bring a packed lunch to eat together at 1pm before you depart

For More Information:

- Please contact David Goodall by email (mission@ywmethodist.org.uk) or phone (07854 308513)